

Set up Dreamweaver for posting to Luxon Websites

Introduction

During the course of your work here at Luxon, you may need to work on one of the Luxon websites. These procedures show you how to set up your work environment to work safely and cooperate well with other people working on different areas of the site.

Before You Start

- Install Dreamweaver.

Accept the Default installation settings.

- Identify which Luxon site you need to work on.

The site name is given in your job assignment. Possible sites include Luxon.com, Edron.org, or the company intranet.

- Know your Universal Login name.

If you do not know your Universal Login name, you can get it from your System Administrator

- Obtain a WebDAV password from your System Administrator.

Set Up Dreamweaver Preferences

This task should take you 20 minutes.

The following procedures describe how to configure your Dreamweaver installation to safely work on Luxon websites.

- 1 Select File>Preferences.

The Preferences window launches.

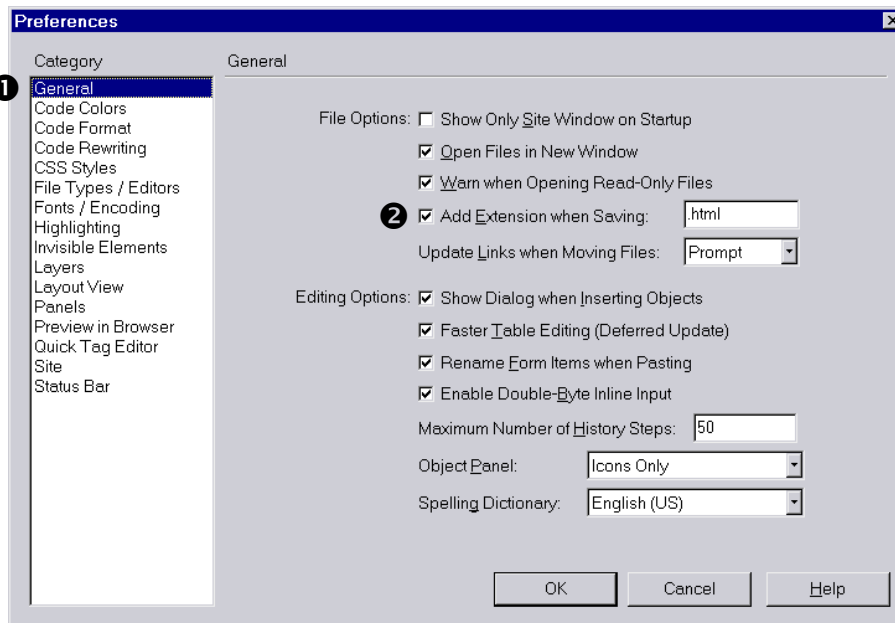
- 2 Select each option listed below and set the preferences for that option as described.

Your window should match the accompanying image.

Important! Change only the preferences described below.

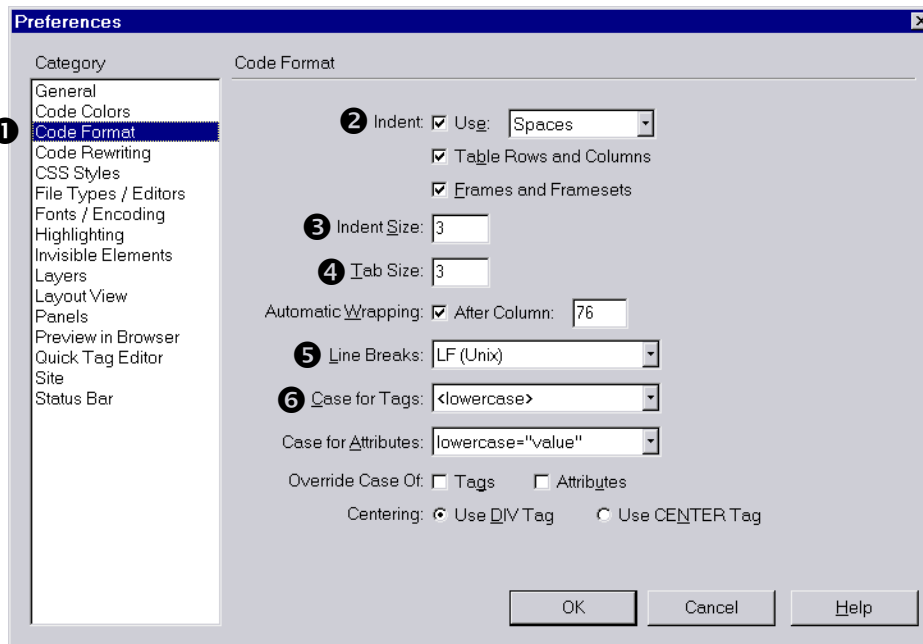
General Preferences

- ❶ **Preferences:** Select General.
- ❷ **Add Extension When Saving:** Change to .html



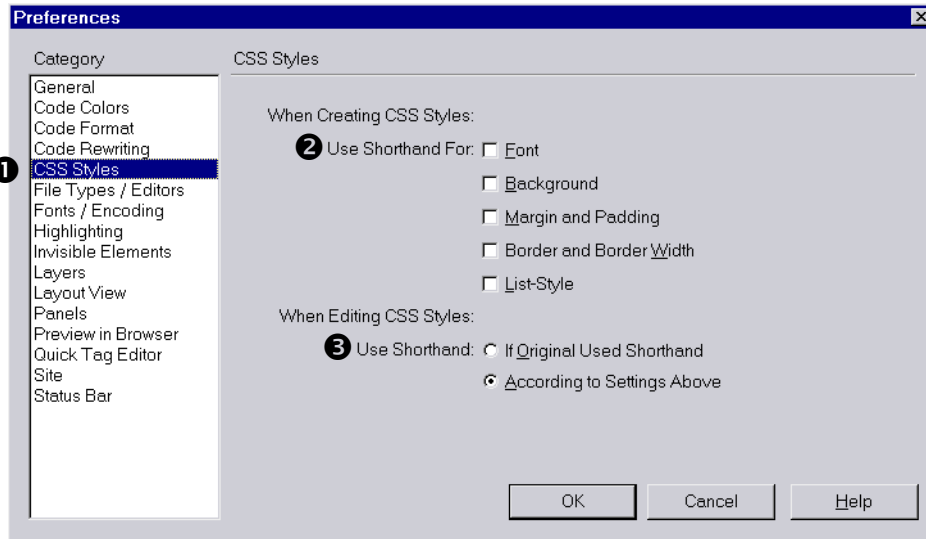
Code Format Preferences

- ❶ **Preferences:** Select Code Format
- ❷ **Indent:** Change to Use Spaces
- ❸ **Indent Size:** Change to 3
- ❹ **Tab Size:** Change to 3
- ❺ **Line Breaks:** Change to LF (Unix)
- ❻ **Case for Tags:** Change to <lowercase>



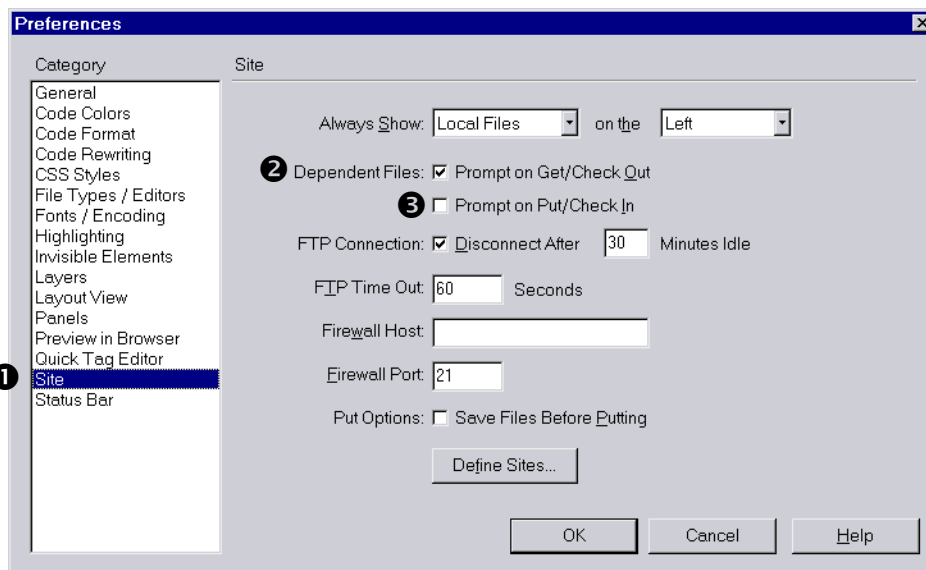
CSS Styles Preferences

- ❶ **Preferences:** Select CSS Styles
- ❷ **When Creating CSS Styles>Use Shorthand For:** Uncheck all boxes
- ❸ **When Editing CSS Styles>Use Shorthand For:** Select According to Settings Above



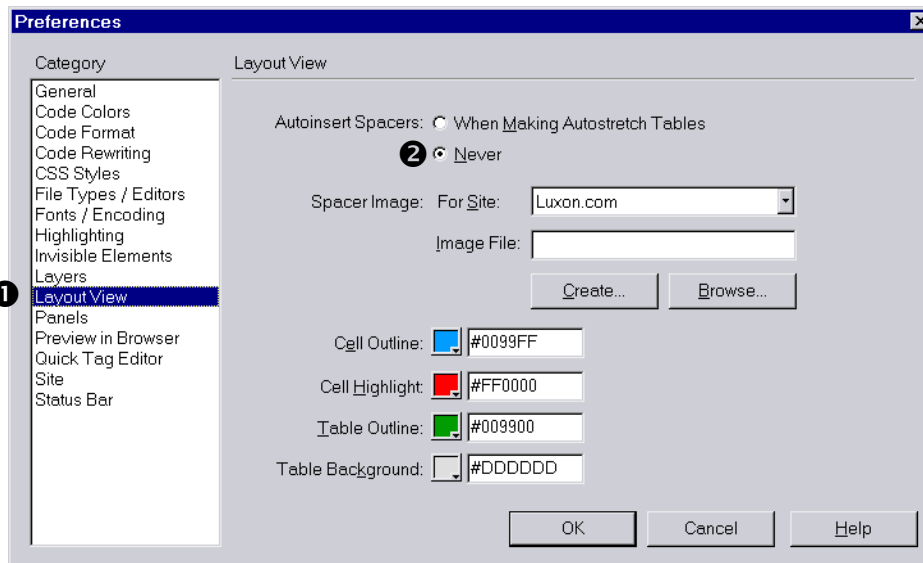
Site Preferences

- ❶ **Preferences:** Select Site
- ❷ **Dependent Files:** Check Prompt on Get
- ❸ **Dependent Files:** Uncheck Prompt on Put.

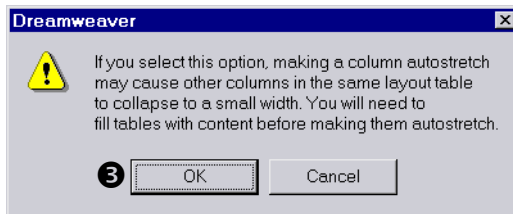


Layout View Preferences

- ❶ **Preferences:** Select Layout View
- ❷ **Autoinsert Spacers:** Select Never



- ❸ When the Dreamweaver information box launches, click OK.



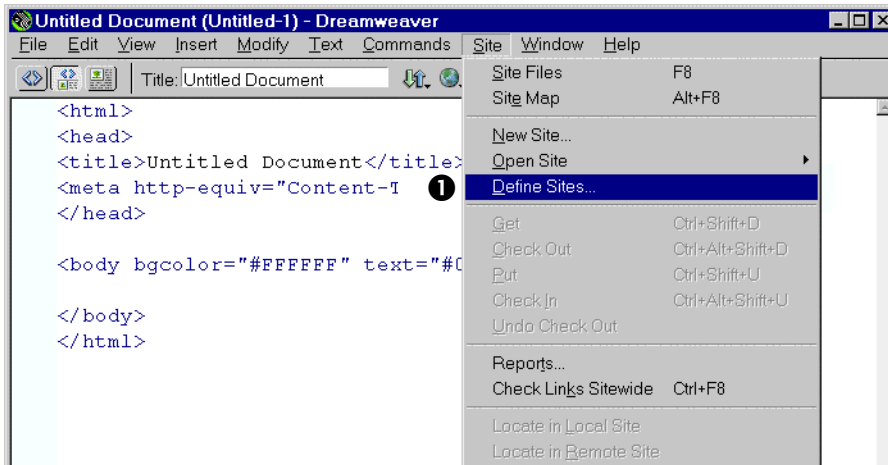
Your Dreamweaver installation is now configured and ready to safely work on Luxon websites.

Set Up a New Site

This task should take you 20 minutes. Time may vary based on how many dependent files you download.

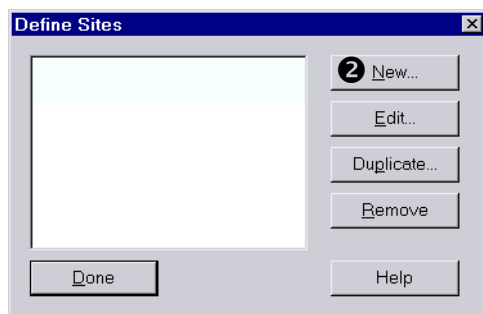
The following instructions detail how to set up a mirrosite on your local computer using Dreamweaver.

- 1 Select Site>Define Sites



The Define Sites window launches.

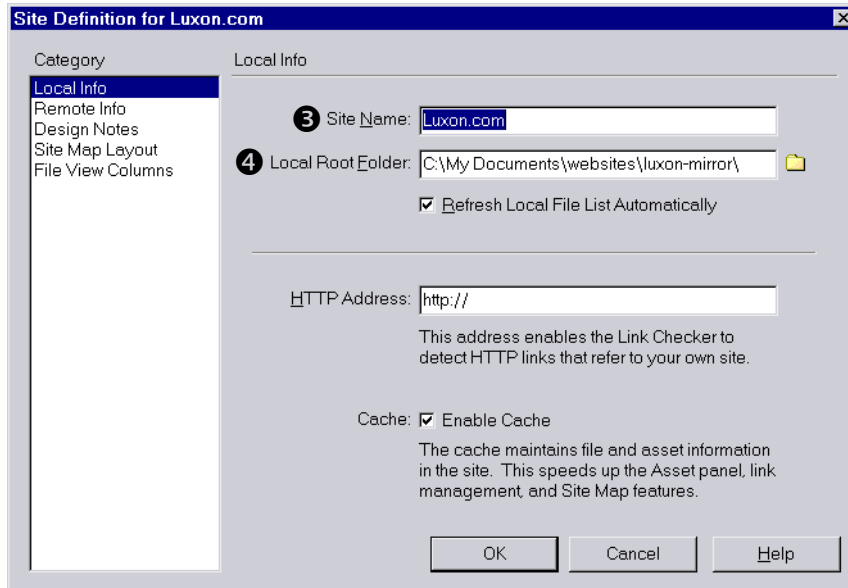
- 2 Click New.



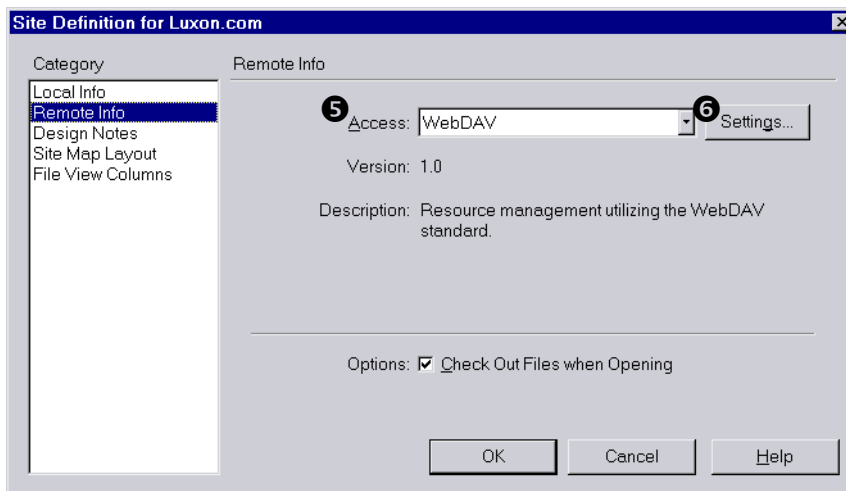
The Site Definition window launches.

- 3 **Local Info>Site Name:** Enter the name of the site you are working on (for example, Luxon.com)
- 4 **Local Info>Local Root Folder:** Accept the default location, or navigate to a location with lots of free space.

This is your local mirror area. It will quickly fill with dependent files as you work on more pages.



- 5 **Remote Info>Access:** Select WebDAV from the pull-down list.
- 6 Click the Settings button.



The WebDAV Connection window launches.

7 Enter the following items in the WebDAV Connection window:

1 **URL:** Enter one of the following URLs, depending on your site:

For This Site...	Enter This URL...
Luxon.com	http://rehearsal.luxon.com:8002/
Edron.org	http://edron.edron.org:8002/
Intranet	http://dweezil.luxon.com:8004/

2 **Username:** Enter your Unified Login name (for example, lars0178).

3 **Password:** Enter your WebDAV password.

4 **Email:** Enter your Email address (for example, lars0178@luxon.com).

When you edit a file, Dreamweaver locks it and shows other users your email address to indicate ownership.

5 Click OK to exit the WebDAV Connection setup.

The screenshot shows a 'WebDAV Connection' dialog box with the following fields and values:

- 1 URL: http://rehearsal.luxon.com:8002
- 2 Username: lars0178
- 3 Password: [masked]
- 4 Email: lars0178@luxon.com

There is a checked checkbox for 'Save Password' and 'OK' and 'Cancel' buttons at the bottom right. A circled number 5 points to the OK button.

8 Click OK to exit the Site Definition setup.

You should now have a working mirrorsite and be ready to start working on Luxon websites.